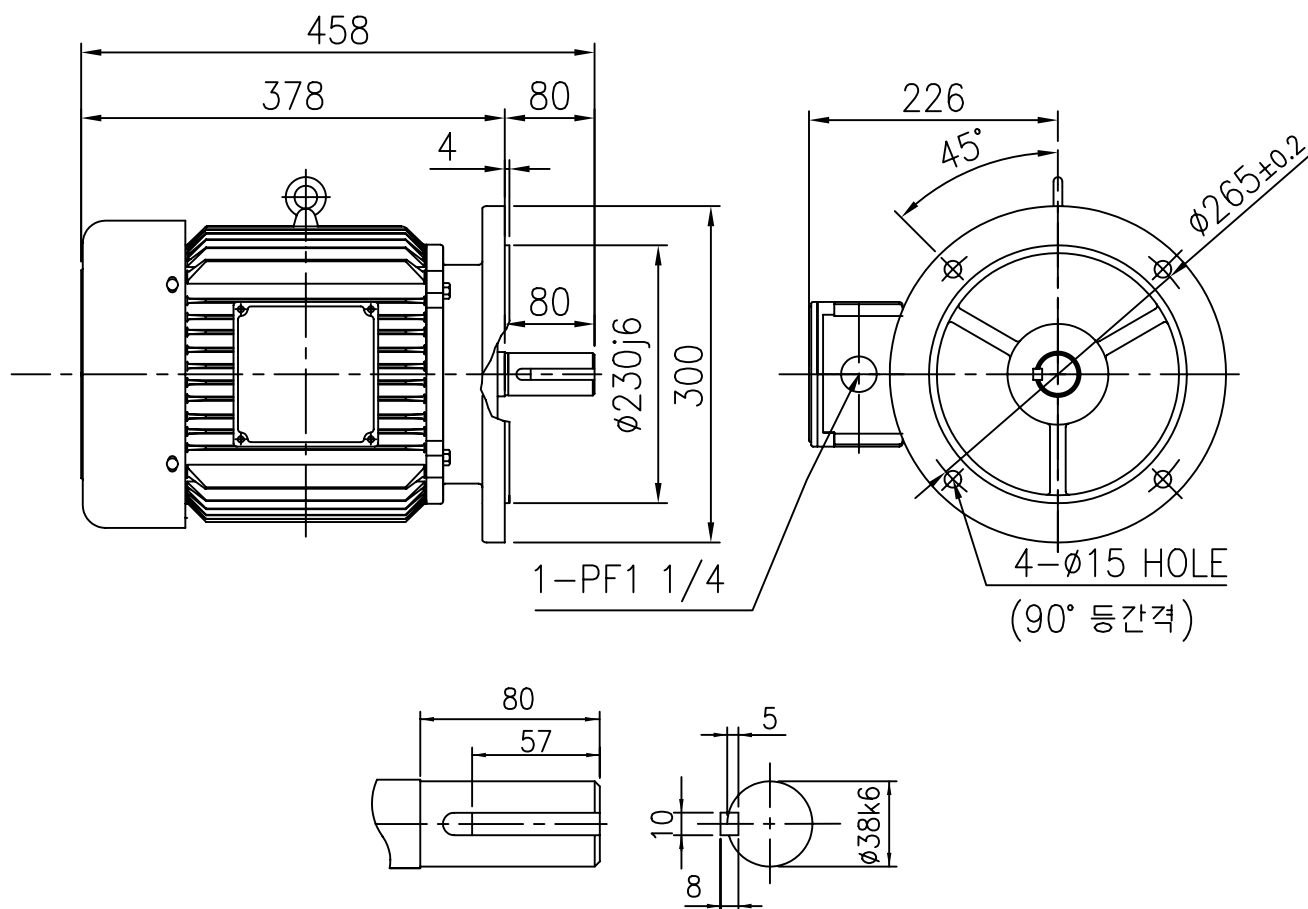


OUTLINE DIMENSION



SHAFT EXTENSION

<NOTE>

- 1. TYPE : TEFC(Totally Enclosed Fan Cooled)**
FOOTLESS MOUNTED TYPE
- 2. THE TOLERANCE FOR THE KEY DIMENSIONS**
IS IN ACCORDANCE WITH KS B 1311-84
- 3. THE TERMINAL BOX MAY BE ROTATED**
STEPS OF 90°

4. CAST IRON FRAME AND END BRACKETS.
5. STAINLESS STEEL NAME PLATE WITH
CONNECTION DIAGRAM.
6. STEEL FAN COVER AND
AL. TERMINAL BOX.

FLANGE NO.	OUTPUT (KW)				INS. CLASS	PRO- TEC- TION	RA- TING	BEARING NO.						APPROX. WEIGHT (Kg)		
								2 P		4 P		6P				
	2P	4P	6P	8P				DRIVE	OPP.D.	DRIVE	OPP.D.	DRIVE	OPP.D.	2P	4P	6P
FF265	5.5				F	IP54	CONT.	6208ZZ	6206ZZ					71		

UNIT	mm	SCALE	$\frac{N}{S}$	PROJECT'N	3rd Angle	TITLE	OUTLINE
DESIGNED		CHECKED		APPROVED			
2009.04.06 M.H.CHOI		2009.04.06 S.S.YUN		2009.04.06 H.T.KIM		SUBJECT	FF265 V1
HIGEN Motor co., Ltd						DWG. NO.	DW-KMH-08HK3F